

TOTAL TS+RS+AS=100%

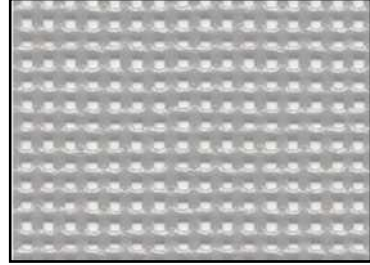
TS= Solar Transmission 28%

RS= Solar Reflection 40%

AS = Solar Absorption 32%

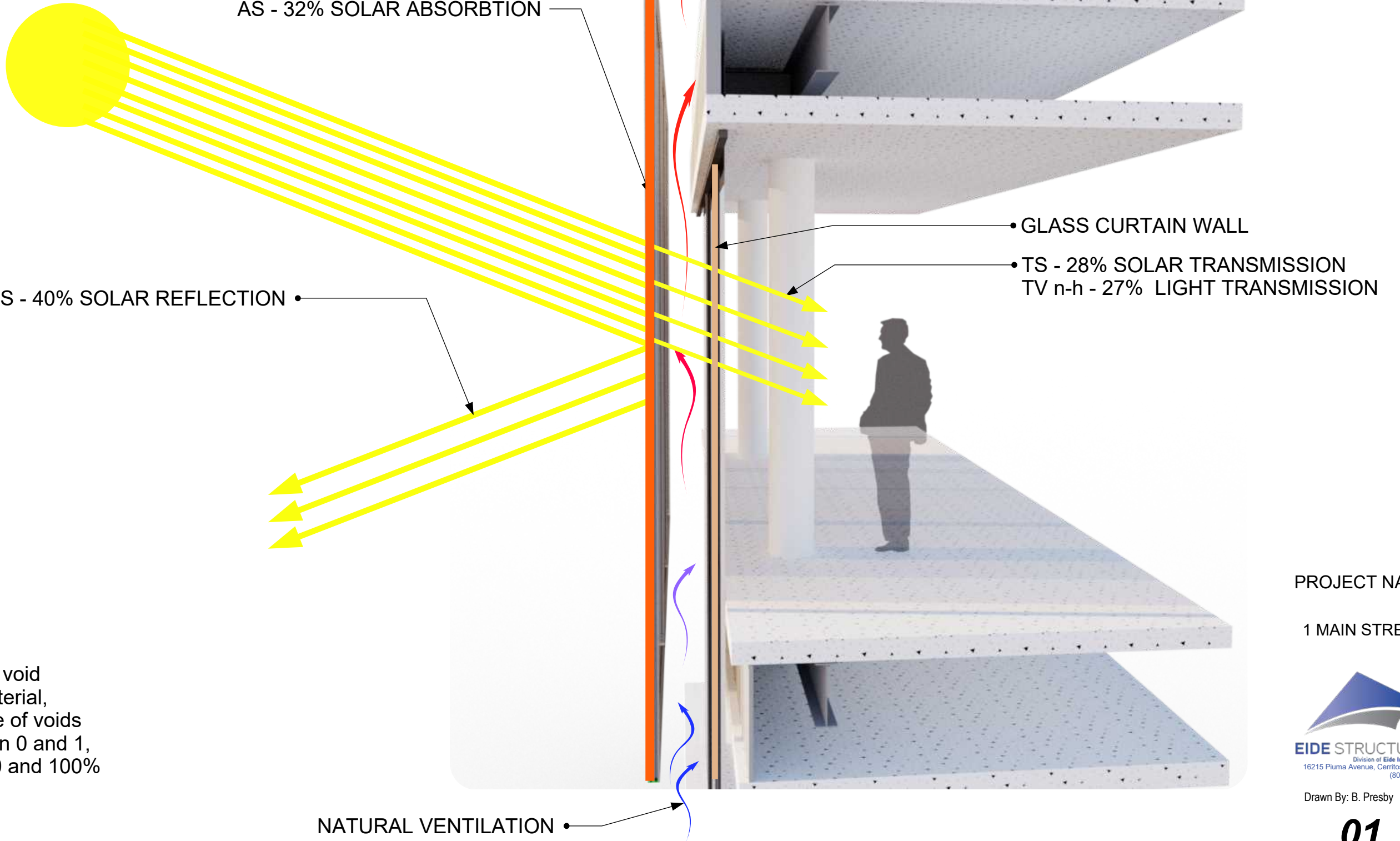
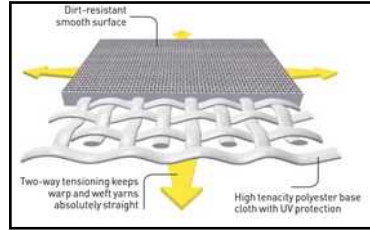
TV n-h = Normal-hemispherical visible light transmission (27%)

Serge Ferrari  
FT 381 Fabric



Silver-metallic 381-3128

Précontraint Serge Ferrari®  
technology



POROSITY = measure of the void (i.e. "empty") spaces in a material, and is a fraction of the volume of voids over the total volume, between 0 and 1, or as a percentage between 0 and 100%

PROJECT NAME

1 MAIN STREET



Drawn By: B. Presby 07-05-17

01